



SAFARI SPECIALISTS



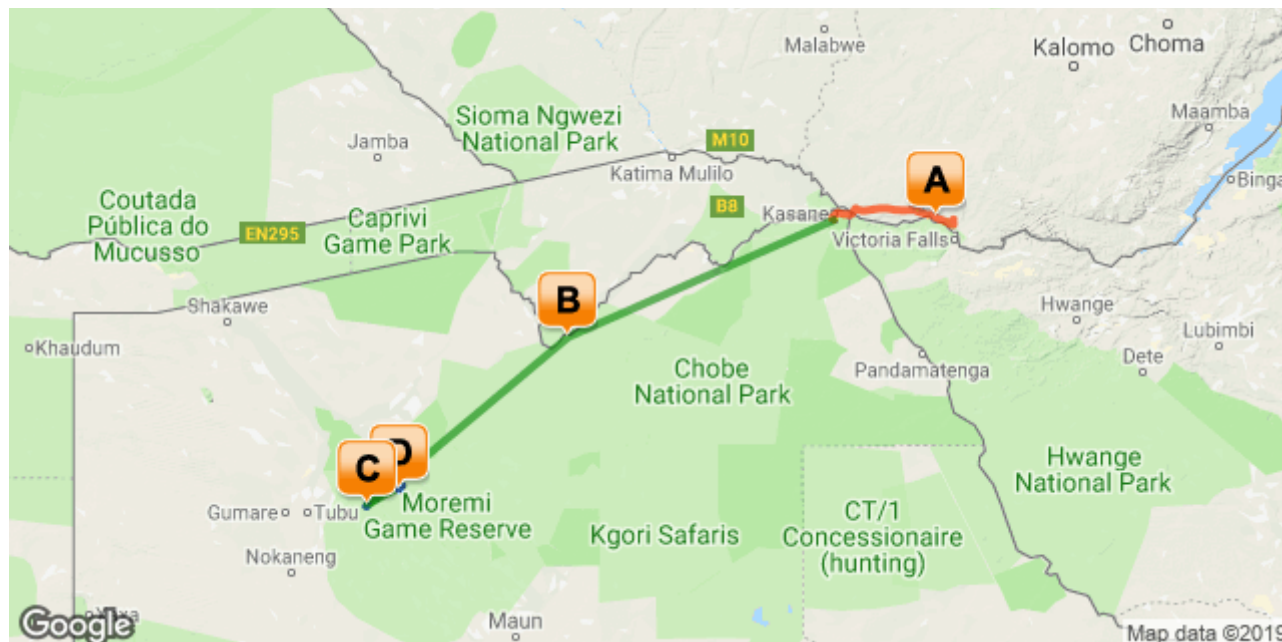
BOTSWANA IS OUR HOME SAFARIS ARE OUR PASSION

10nts Premier Collection_Premier_2020

Livingstone (Victoria Falls) - Linyanti Concessions - Okavango Delta - Moremi Game Reserve

11 Days / 10 Nights

Start Livingstone / Ends Maun



[Click here to view your Digital Itinerary](#)

Introduction

Start	Accommodation	Destination	Basis	Duration
Day 1	Tongabezi Lodge	Livingstone (Victoria Falls)	FI	2 Nights
Day 3	King's Pool	Linyanti Concessions	FI	3 Nights
Day 6	Jao Camp	Okavango Delta	FI	2 Nights
Day 8	Mombo Camp	Moremi Game Reserve	FI	3 Nights

Key

FI: Fully Inclusive - Bed, All Meals, Fees and Activities

Transport

Transfers

Date	Company	Details
Day 1	Wild Horizons	Harry Mwanga Nkumbula International Airport [LVI] - Tongabezi Lodge
Day 3	Wild Horizons	Tongabezi Lodge - Kasane Airport [BBK]

Flight Information

Date	Flight	Details
Day 3	Wilderness Air	Kasane Airport [BBK] - King's Pool
Day 6	Wilderness Air	King's Pool - Jao Airstrip
Day 8	Helicopter Horizons	Jao Camp - Mombo Airstrip
Day 11	Wilderness Air	Mombo Airstrip - Maun Airport [MUB]

Cost of the safari 2020

Season	Cost per person sharing	Single Supplement	Average nightly rate per person
11 January - 31 March 2020	US \$14550	US \$3580	US \$1460 per person per night sharing
01 April - 30 April 2020	US \$17350	US \$4480	US \$1740 per person per night sharing
01 May - 31 May 2020	US \$20430	US \$5450	US \$2040 per person per night sharing
01 June - 31 October 2020	US \$27440	US \$7930	US \$2740 per person per night sharing
01 November - 19 December 2020	US \$16340	US \$4160	US \$1630 per person per night sharing

Special notes

- Tongabezi quoted on Bird or Tree House - optional upgrade to the Dog House or Nut House (additional cost) or change to a Cottage (reduced cost)
- Please contact us for specific date Festive Season pricing between 20 December – 10 January due to surcharges applicable at selected camps
- Please note that where a booking crosses over 2 different rate periods e.g. Oct & Nov, neither rate is applicable – please request a special quote
- The above rate is subject to change due to major currency fluctuations, fuel surcharges and increases in national park fees (see below)
- Single supplement is for accommodation only, applicable when travelling with more than 2 guests and excludes a flying surcharge for guests travelling solo – rate available on request
- Subject to availability at the time of booking
- Pre- and post-arrangements on request – please contact us for options

Family Friendly

This itinerary is not suitable for younger children due to the high end properties in Botswana and their child policy, however they do have villas that cater to families with children – just no child discount and additional requirements for private vehicle or sole use.

Individual camp policies:

- Tongabezi: min age 7 year. Children under 14 years pay 50%
- Jao camp: min age 6 years, no discount, private vehicle and private villa required. No mokoro for children under 13 years. Children under 17 years must share with adults.
- Kings Pool: min age 6 years, no discount, private vehicle and private villa required. No mokoro for children under 13 years. Children under 17 years must share with adults.
- Mombo: Children 6 years at Mombo in the family tent, private vehicle required up to 12 yrs. Children only permitted over 13 years at Little Mombo. Children under 17 years must share with adults.. No discounted child rates apply.

Park Fees and Departure Taxes and Tourism Levy

Please be aware that Park Fees, Conservation Levies, VAT, Airport Taxes and Government Levies may increase in 2020. Regrettably such increases are beyond our control and are excluded from any bookings, provisional or confirmed. We will inform you should any increase be advised.



Travel for Impact – Responsible Travel

By booking this itinerary, you donate USD\$2 for every night of travel per person on the booking. Your donation goes to Travel for Impact (TFI) and ensures that your safari has a meaningful impact on the people who live locally. For more information on giving back to your chosen destination of travel, visit www.travelforimpact.com



Feed a Child Botswana

Safari Specialists contribute USD\$5 per person per booking to Feed A Child Botswana. This contribution goes directly towards the purchase of Nutri-meal, a fortified cereal provided to undernourished children in our local community in Maun.



Okavango Air Rescue

Please note that we include Okavango Air Rescue patronage. They provide paramedic or Doctor assisted helicopter medical evacuation as required, in conjunction with your travel insurance. Please discuss further details with your consultant and visit www.okavangorescue.com

Day 1-3: Tongabezi Lodge, Livingstone (Victoria Falls)

On arrival at Livingstone Airport you are met by a Tongabezi representative and transfer to Tongabezi Lodge where you stay for 2 nights on a fully inclusive basis. Please note that accommodation is quoted based on the Bird or Tree House pricing, subject to availability and optional upgrades.



LIVINGSTONE (VICTORIA FALLS)

At Victoria Falls, the earth splits open and swallows one of Africa's greatest rivers, the mighty Zambezi, creating the largest sheet of falling water on earth. As the water hits the narrow depths of the Batoka Gorge beneath, it blasts a cloud of mist skywards, lending the falls their local name 'mosi-oa-tunya' (the smoke that thunders). When the Zambezi is at its fullest, the mist hangs a permanent raincloud above the falls, showering visitors on even the sunniest of days and visible for miles around. Above the falls on the upper Zambezi, boats cruise the tranquil water at sunset while the distant spray catches the fading light downstream. Below the falls, the Batoka Gorge's rocky walls funnel the lower Zambezi into a chain of world-class rapids, prime for white water rafting.

Aside from being a UNESCO world heritage site and a natural world wonder, Victoria Falls also forms a natural border between Zimbabwe and Zambia. The falls can be seen from both countries, and for the most part the same activities are offered on both sides, from helicopter scenic flights to village visits and souvenir shopping. Whether your idea of getting away from it all is a relaxed high tea in colonial grandeur or a heart-stopping bungee jump off a bridge, Victoria Falls keeps both the faint of heart and the most insatiable of adrenalin junkies busy for days.

From Zambia, a side on view of the falls is on offer with views into the Batoka Gorge, as well as the possibility of perching yourself at the edge of the falls on the vertigo-inducing Livingstone Island. From Zimbabwe, you'll get a full-frontal view of three quarters of the falls' 1.7km wide curtain of water from viewpoints and footpaths meandering through a rainforest kept hot and humid by the spray of the falls.

Overnight: Tongabezi Lodge [View iBrochure](#)

Includes: meals, local drinks, private in-house activities and laundry

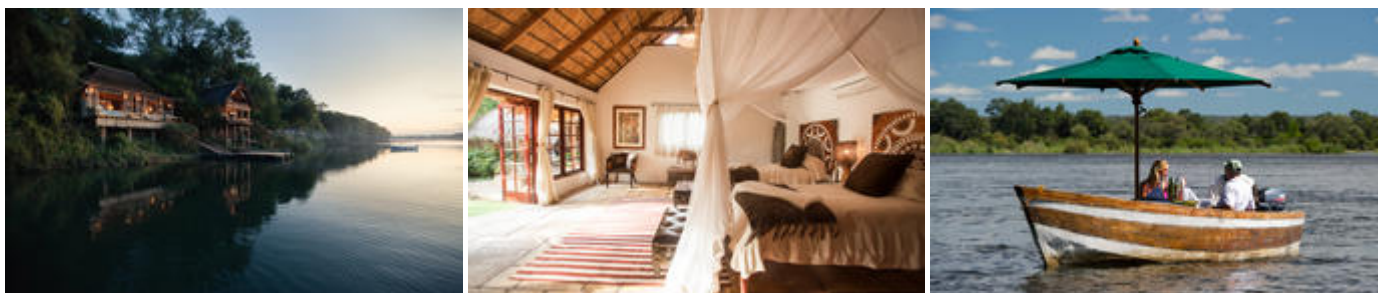
Excludes: all park fees, premium drinks

Activities: morning and afternoon boat cruise, canoeing (subject to water levels), guided walks, fishing, Victoria Falls tour (Zambian side), game drive in the Mosi-Oa-Tunya National Park, walk in the gorge, local village and museum visit, mountain biking and shopping excursion.

Tongabezi Lodge is an exclusive lodge away from the crowds on the banks of the Zambezi River, 15 km upstream from the magnificent Victoria Falls. It is a small and secluded lodge, set in a tranquil grove of African ebony trees on a sweeping bend of the Zambezi River.

The lodge accommodates 18 guests and consists of five cottages and four spacious, open-planned stone and thatch houses. All rooms have fabulous river views and en-suite bathrooms. The four houses - Honeymoon House, Tree House, Bird House and the Dog House – are uniquely designed and constructed using local materials with an open-plan bedroom featuring a four poster double bed sheltered by a large airy mosquito canopy. The quirky and open-plan design of the houses ensures that guests have the best views in Africa. Each house and cottage at Tongabezi has valet service for the duration of the guests' stay to ensure a comfortable experience and each valet has in-depth knowledge of Tongabezi and the surrounding area. The camp's swimming pool is landscaped into a natural cliff and meals are served in the large dining room or on the deck overlooking the river

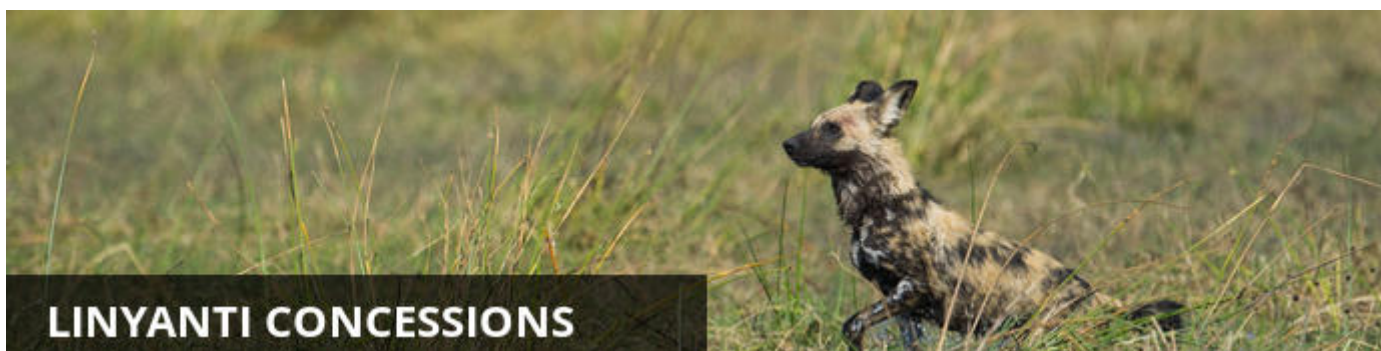
Activities at Tongabezi include guided canoeing excursions, guided walks with lunch on one of the islands, fishing, a visit to the Victoria falls on the Zambian side, a game drive to the Mosi-oa-Tunya National Park, a walk in the gorges below the falls, a cultural visit to the local museum, a visit to Livingstone town and sunrise and sunset boat trips on the Zambezi. Other activities on offer at an additional cost are white water rafting, horse riding, elephant back safaris, lion walks and bungee jumping - these activities can be booked prior to guests' arrival. **Airport transfer time:** 25 minutes



Day 3-6: King's Pool, Linyanti Concessions

After breakfast, you are transferred across the border into Botswana and through to Kasane Airport and fly via light aircraft to King's Pool Airstrip. You are picked up by a representative from camp and taken through to the lodge where you are staying for 3 nights on a fully inclusive basis.

Please note that the flight is booked on a 'seat rate' basis and therefore flight times are not scheduled until the day prior to flying, lodge managers will arrange your activities and transfers accordingly. Please note that there is a strict luggage restriction on all light aircraft flights of 15kg per person in soft bags, plus 5kg hand luggage and there may be up to 3 stops en-route.



The Linyanti is a safari addict's bush nirvana. One of the most remote and exclusive pockets of Botswana, this pristine wilderness is what great game viewing and wildlife documentaries are made of. Only private concessions are on offer here, where the rules are flexible and the crowds can't go. The Linyanti is not just for ficking off the big game; it also has a knack for delivering lesser-spotted bucket list items, whether it's a rare bush pig or that long-searched-for wild dog.

Very few camps operate in the Linyanti. Each offers different habitats and landscapes with one common theme: a strong track record for game viewing during Botswana's drier winter months. Together with the Chobe Riverfront, the Linyanti homes the highest density of African elephants in the world. Many camps also offer seasonally dependent water-based experiences, be it on a spillway, river, lagoon or channel to break up the game drive routine.

Just one of the Linyanti's concessions alone is twenty times the size of Manhattan, yet only forty people can stay during any night of the year. If Botswana puts a heavy emphasis on preserving the wild and taking only a handful of people into the bush, then the Linyanti is where this concept is taken to the extreme.

Here, you can follow the big game off-road, whether in a white-knuckled pursuit of a lioness chasing buffaloes, or during a quiet crawl off-track to see wild dog puppies emerging from their den for the first time. Possibilities exist for exploring the bush on foot for adrenaline-pumping game approaches, and many camps offer game viewing hides for a more relaxed approach to wildlife sightings, or even overnight sleep outs.

Overnight: King's Pool [View iBrochure](#)

Includes: meals, local drinks, activities, park fees & laundry

Excludes: premium drinks

Activities: day & night game drives and guided bushwalks on request as an optional activity

Kings Pool Camp is located in the Linyanti Wildlife Reserve, a private reserve in the Linyanti area in which the source of the Savuti Channel is located, in the northern part of Botswana, on the western boundary of Chobe National Park. The camp is idyllically located overlooking the oxbow-shaped Kings Pool Lagoon and the Linyanti River to the north.

Kings Pool Camp is one of the most luxurious in Botswana. There are nine twin-bedded tented rooms under cool thatch, overlooking the hippo filled lagoon in front of the camp. Each of the suites has its own large bedroom area, lounge, private plunge pool and each en-suite bathroom has two showers, two hand basins and a separate flush toilet. There is an outdoor shower for those who prefer to shower under the stars. The main lounge, pub and dining room are under thatch, and there is a swimming pool built into the deck. The main area is linked to the bedrooms by a raised walkway to allow animals to wander freely around the camp.

Activities include game drives in open 4x4 vehicles and night drives. Walking is offered as an optional activity on request, which requires a special guide. Highlights of this camp include the amazing view across the lagoon with sounds of the wildlife all around, as well as two game viewing hides. One hide is located at the western end of the camp, where guests can spend a siesta watching game come down to drink. The other is an underground hide, with the water at eye-level, offering an extraordinary experience with feet and trunks almost within touching distance while you are safely inside.

The Linyanti area has a large wildlife resource with a wide variety of species, but it is most noted for its very large elephant population, which can reach enormous densities during the winter months. Activities are focused on game drives. During periods of high-water levels, water activities may be possible but not guaranteed.

Airstrip Transfer Time: 45 minutes - 1 hour



Day 6-8: Jao Camp, Okavango Delta

After breakfast and morning activity (flight time permitting) you transfer across to Jao Camp where you stay for 2 nights on a fully inclusive basis.



The Okavango Delta is where the wild things are: an immense, waterlogged oasis alive with elephants and birdlife, adrift in the middle of Kalahari sands. The real magic of the Delta lies in its water, trickling through from far away highlands, and spreading across the channels and floodplains.

During winter in the Kalahari, when the sun has baked the earth bare and turned the desert its driest, water fills the Okavango; transforming the floodplains into a Noah's Ark of African wildlife.

As the water brings life to the delta, its local residents shape and recreate it. Termites slowly build mounds into islands, germinated with palm trees by passing elephants. Waterways open and close on the whim of wide-bottomed hippos, carving out channels where they crash through reeds, and leaving room behind them for exploration by mokoro.

The Okavango has many faces, which change throughout the year, prompted by that most unpredictable diva of all: the weather. Water levels rise and drop, expanding and shrinking islands, while animals move where the life is easiest and the grass greenest. In a few days, a sandy road driven by vehicle can become a waterway of unknowable depth, prompting a safari by boat instead.

Where and when you stay in the Okavango Delta will hugely influence what you do in the bush each day, the animals you're most likely to see and finally, the safari experience you'll have.

The delta's watery heart is best discovered by mokoro through shallow channels and floodplains, as well as crossing the islands on foot. For less water and more of the big game, visit a camp on its drier edges (including Moremi Game Reserve and the Khwai Community Area), jump on a vehicle and seek out the animals hiding in the woodlands.

Overnight: Jao Camp [View iBrochure](#)

Includes: meals, local drinks, activities, park fees, laundry & return airstrip transfers

Excludes: premium drinks

Activities: day & night game drives, mokoro excursions (seasonal) and boating (seasonal)

Jao Camp is situated in the Jao Reserve, an area of 60,000 hectares, in Botswana's Okavango Delta. It is built in a private reserve bordering on the Moremi Game Reserve, to the west of Mombo, on a densely wooded, oval shaped island. The camp is positioned to accommodate excellent views of the floodplains and savannah, which can be enjoyed from the privacy of your private balcony or from the communal boma.

Jao Camp is one of the most luxurious in Botswana. Accommodation is in nine twin-bedded tented rooms under cool thatch, overlooking the hippo filled lagoon in front of the camp. Each of the suites has its own large bedroom area, lounge and a deluxe en-suite bathroom with an outdoor shower. The private deck allows you to view the game and wildlife in total seclusion. The thatched main dining and lounge area is positioned for you to enjoy sundowners while you watch the sunset and a candlelit meal can be enjoyed in the open air within the boma. For those wanting a more private dining experience, meals can be enjoyed al fresco on your private deck. For a truly rejuvenating experience, Jao also has a salon where a wide range of massage therapies are offered.

This area comprises a superb variety of habitats, ranging from permanent waterways and lagoons on the one extreme to thick Kalahari sands on the other. Jao Camp offers both land and water activities, the focus of which is dependent on the fluctuating levels of the Okavango's floodwater. Day and night game drives are offered, giving you an opportunity to explore this magical reserve. Water levels permitting, boating and mokoro excursions in traditional dugout canoes offer a tranquil escape on the winding waterways of the delta. There are two platform hides in the Jao Concession offering secluded game viewing, up close but in safety, providing amazing photographic opportunities.

Airstrip Transfer Time: 15 minutes



Day 8-11: Mombo Camp, Moremi Game Reserve

After breakfast and morning activity (flight time permitting) you are transferred by helicopter to Mombo Camp where you are staying for 3 nights on a fully inclusive basis.



The Moremi Game Reserve is all about searching for big game; where the habitats are as diverse as the wildlife itself. Water-adapted antelopes and wary-eyed buffaloes spill out into floodplains, behind towering woodlands where leopards hide on the high branches. Dead trees cast silhouettes over elephant-filled savannas a stone's throw from papyrus-fringed channels stretching out to the delta beyond.

When you arrive in the Moremi Game Reserve, it's anyone's guess what you'll find lurking in the long grass. From wild dogs stalking waterbucks to long sunsets by a hippo-filled lagoon, the scenes will live on in memory long after the journey home.

Kick up sharp smelling clouds of dust on a morning drive, disturbing pockets of warm air in the reeds as you splash through water crossings in pursuit of a distant lion's call. Pause by the edge of large lagoons, squinting to catch mischief making hyenas as they emerge from the trees to drink.

When you get sick of game drives, discover the channels by boat while Squacco herons fly alongside you into the wind. Watch a lazy sunset with the blue-cheeked bee eaters before returning to dry land for more hard-core bush exploration.

As Moremi Game Reserve is bound by national park rules, activities here are limited to game drives during hours of daylight with no off-roading, and boat cruises on the permanent channels.

While most of the reserve is open to the public, two private lodges sit in the Mombo Concession to the north of Chief's Island, surrounded by the waters of the Okavango Delta. Boating isn't possible here, instead the area offers the ultimate in dry-land game viewing. Hailed as Botswana's predator capital, this exclusive corner is closed to outsiders and home to the big five, where the invitee list fills up years in advance.

Overnight: Mombo Camp [View iBrochure](#)

Includes: meals, local drinks, activities, park fees, laundry & return airstrip transfers

Excludes: premium drinks

Activities: day game drives

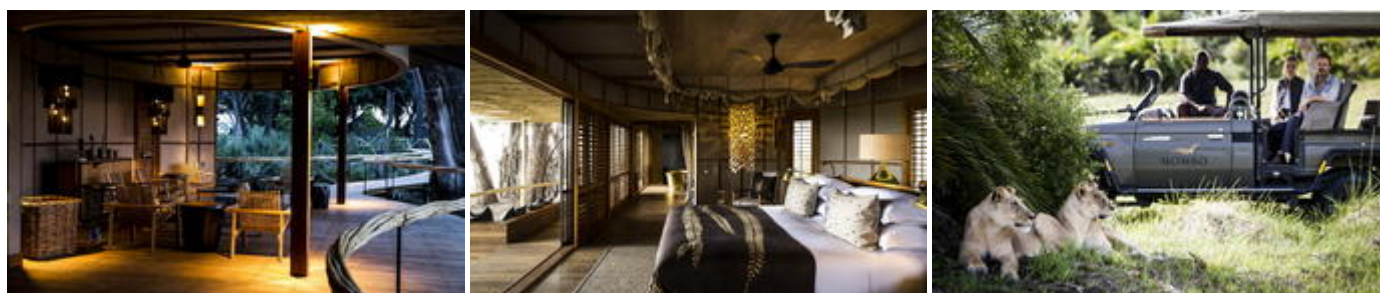
Mombo Camp is situated on Mombo Island, adjoining the northern tip of Chief's Island, arguably Botswana's prime game viewing area located within the Moremi Game Reserve in the Okavango Delta. The island is surrounded by open floodplains and the camp itself is largely built in and around the shade of some large mangosteen, ebony and fig trees - overlooking a wonderful floodplain teeming with game.

The camp has nine luxuriously furnished tents, raised off the ground. The guests' rooms and connecting walkways are up to two metres off the ground thus allowing game to wander freely through the camp while at the same time ensuring guest safety. The stylish tented rooms are spacious and well-appointed and have en-suite facilities with an additional outdoor shower for those who enjoy a shower under the stars. The dining room, pub and living area overlook the open plain in front of the camp and there is a plunge pool for relaxing in the heat of the day.

Game viewing activities at Mombo are undertaken in open 4x4 vehicles throughout the day, the restrictions of being in the Moremi Game Reserve and fluctuating water levels mean that only game drives are offered from camp.

The Mombo area is renowned for being the most exceptional game viewing area in the Okavango Delta with a high concentration of plains game and predators, including big cats. Lion sightings are particularly good and guests may also see leopard, large herds of buffalo, cheetah, wild dog, elephant, hyena, giraffe, wildebeest and zebra. Black and white rhino have been reintroduced with outstanding success to the area (albeit most are further away from camp), thanks to the Botswana Rhino Reintroduction Program.

Airstrip Transfer Time: 15 minutes



Day 11: End of Itinerary

Following breakfast and a morning activity (flight time permitting), you will be transferred to the airstrip in time for your light aircraft transfer to Maun Airport. A Safari Specialists representative will meet you on arrival to assist with your onward arrangements.

Travel Information

- Please take note of our Booking Terms & Conditions. It will be understood that these have been read and accepted by you on receipt of confirmation of the booking.
- For your safety and peace of mind, on confirmation of your booking, we strongly recommend that Travel Insurance is arranged to cover cancellation, curtailment, emergency evacuation, medical and repatriation expenses, damage/theft/loss of personal luggage, money and goods.
- Road and air transfers and activities are quoted on a seat basis (shared) unless otherwise requested or specified. Passengers may have various stops en-route to a destination. The transfer or charter company reserves the right to specify departure and arrival times. Private charters can be requested at an additional cost.
- Passengers weighing over 100kg should please advise us at the time of booking, as we may need to cost in an additional seat on internal flights for your safety and comfort.
- The costs are subject to change at any time due to fluctuations in fuel costs, taxes, levies, government regulations, rate of exchange and factors that are imposed upon us by our suppliers that are beyond our control.
- Please advise us of the ages of children (under 18) travelling, together with their date of birth, at the time of booking as not all lodges accept children and there may be restrictions or conditions which can affect pricing.
- We recommend that optional activities be booked in advance at time of confirmation to guarantee availability e.g. Helicopter Flight of the Angels in Victoria Falls
- Please allow a minimum 2-3 hours connection time in Johannesburg for international flights. It is important that you check that your flight tickets have been issued in your full names as per your passport.
- We require full payment for international and domestic scheduled flights at the time of confirmation e.g. Air Botswana Johannesburg to Maun, Proflight Livingstone - Lusaka and so on. We are not able to guarantee any flights before receipt of payment as seats are often held for a limited period before ticketing is required so this is a time sensitive issue. Air tickets are considered non-refundable unless otherwise specified. Please confirm the details with your consultant at the time of booking.

Passports, Visas and Travel Documentation

Your passport must have at least 6 months validity before the expiry date and 6 empty pages (not including the endorsement pages). The onus is upon guests to ensure that passports and visas are valid for the countries visited. Please note that certain visas can take up to 3 months to be processed so please consider this when booking.

If you are travelling with children through Southern Africa please be aware that you will be required to have certified copies of their unabridged birth certificates, and passports on hand. If you are not their legal parents, or if only one of you is travelling – you will need to have consent in the form of an affidavit giving you permission to travel with the child.

Inter-camp transfers

Due to the vast distances involved in travelling in the remote areas of Southern Africa - your itinerary may include road, boat and air transfers in small aircraft.

On shared air transfers, all the flight times between lodges are arranged a few days before the flights take place to avoid endless schedule changes. The lodge or camp where you are staying will be advised of your departure time the day before travel and will ensure that you are at the airstrip on time. Although every effort will be made to ensure that guests are transferred together in one vehicle / aircraft, this cannot be guaranteed, especially with larger groups. The aircraft used for inter-camp transfers vary in size from 3, 5, 7 and 12 seater aircraft. We recommend that guests susceptible to motion sickness take appropriate precautions due to flying conditions.

Weight & Luggage Restrictions

There are strict luggage restrictions in place on any itinerary, which includes light aircraft transfers for safety reasons. Luggage, including camera equipment and hand luggage, is restricted to 20 kg per person travelling

on seat rates. Only soft bags will be accepted - no hard suitcases or bags with wheels can be transported, as they physically cannot fit into the aircraft.

The maximum dimensions of the soft bags that can be accommodated are as follows: 25cm/10 inches wide x 30cm/11 inches high and 62cm/24 inches long. Please keep in mind that the baggage compartments on the light aircraft are only 25cm high, so the pilots must have the ability to manipulate the bag into the compartment. Note that laundry can be done on a daily basis at most camps and lodges. Should you arrive with excess baggage without prior warning, your baggage could be delayed, as we may have to fly the baggage into camp at a later stage at considerable extra cost to you. However, should you notify us in advance that your baggage will exceed the limit; we may be able to assist you with alternative arrangements e.g. storage or purchase of additional luggage allowance. For bookings including flights within Zambia & Mozambique, please note luggage weight exceptions under destination information.

Lost Luggage

Lost luggage on international flights is a common problem facing travellers today. We suggest that you pack a small bag with your essentials, including any life sustaining medication, which can be carried with you as hand luggage. If travelling as a couple or family we suggest that you split your clothing between bags so that if one bag gets lost, you will have basic items on hand to see you through the first couple of days while we try and recover your lost baggage.

Please note that whilst we try our utmost to locate and re-unite you with your bags, that there may be charges involved in getting your bags to remote areas, which would be for your cost. Please remember to report the lost luggage to the airline as soon as you make the discovery - the airline will issue you with a Baggage Claim Form, which you will need in order for us to trace the bag.

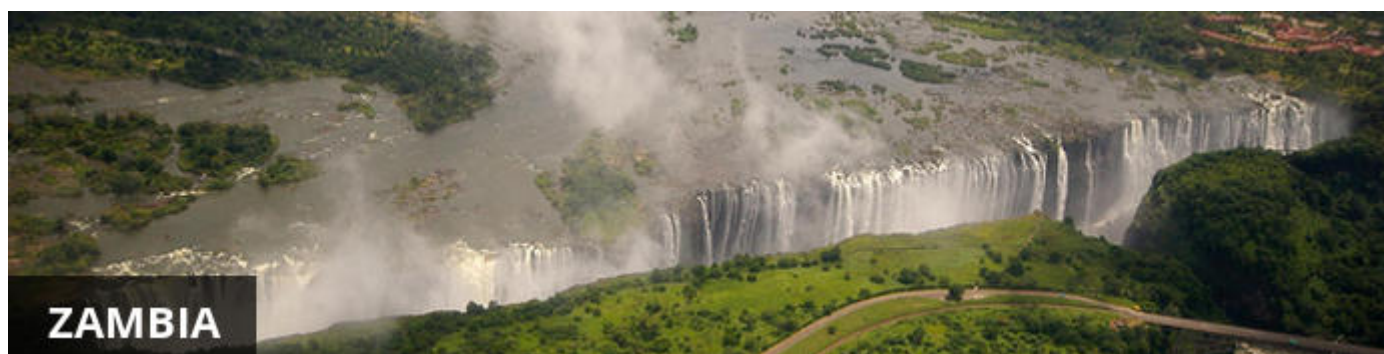
Health and Dietary

Please note that you are travelling to a Malaria-risk area. Please consult your doctor for medical advice prior to travel. Although usually safe to drink, we do not recommend that you drink the tap water. Filtered water is available at the camps and lodges. The camps are isolated and generally have limited power supply and access to supplies. Please notify us in advance of any special dietary requirements, medical conditions and medical equipment you may need with you. Please carry critical medication in your hand luggage. Yellow Fever Certificates - are only required if you have travelled to a Yellow Fever area as designated by the World Health Organisation. Please check with your Travel Clinic or doctor well in advance of your departure date.

General Travel Information

- There is no or limited electricity and cell phone coverage in the camps and lodges excluding major towns and cities. All camps do make provision for charging cameras and electronic devices.
- Please ensure that you do not pack any valuables, cameras, cash, laptops in your checked in luggage – these should be kept on your person at all times.
- Please notify us immediately of any changes to flight arrival and departure details as this affects onward transfer arrangements.
- Please note that most camps & lodges in Botswana do not have double beds. Twin beds are pushed together to make up a double room.
- Although every effort is made to adhere to schedules the company reserves the right and in fact is obliged to occasionally change routes and camps on safaris as dictated by changing conditions or unforeseen circumstances.
- By confirmation of the booking, you acknowledge that you have been made aware and accept that the tour carries inherent risks, and that you voluntarily assume all risks which are associated with the tour. You will be required to sign indemnities at the various camps, lodges and service providers, and abide by their operators code of conduct in order to ensure your safety.
- If you have any cause for complaint while travelling, you should immediately bring it to the attention of the camp manager and / or our Maun office that will attempt to resolve the situation immediately.
- Do not remove any animal artefacts, flora or fauna from any of the areas you visit, as there are strict international regulations on the export of such items.

Please refer to the **Safari Information** for further details on preparing for your safari.



Currency

The official currency in Zambia is the Zambian Kwacha. US\$ Dollar notes (2007 Series onwards), and Visa and MasterCard are accepted.

Visa

Fees for Visitors to Zambia who are eligible to receive their visa on entry US\$ 50.00 for single entry/ US\$ 80.00 for double entry. Some visitors need to apply for visas before arrival - please check with your Embassy. For more information on visas please visit the following address: [Zambian Visa Requirements](#)

ALWAYS have cash available in the correct US\$ amount at all ports of entry - in the event where credit card facilities/ ATM's are not operational.

Kaza Univisa – Zimbabwe and Zambia

Travellers planning to visit both Zimbabwe and Zambia should apply for a UniVisa (also known as KAZA visa). The visa can be obtained in advance, as well as at ports of entry, but cannot be guaranteed.

The UniVisa allows travellers 30 days travel within both Zambia and Zimbabwe, and is also valid for daytrips to Botswana. Travellers must remain within Zambia & Zimbabwe for the visa to stay valid. Visiting Botswana as a daytrip will not affect the visa's validity, provided travellers return to Zambia or Zimbabwe the same day.

Internal Flights and Transfers

On fly-in safaris, movement between the game areas is done on a scheduled basis by Proflight Zambia unless otherwise specified. Proflight uses 12, 18 and 29 seater aircraft for their flights. Transfers between camps in the same game area may be done by light aircraft, but mostly by road/game drive transfer or by boat on a shared seat basis.

Flight times around Zambia | Approximate Proflight flying times

Livingstone to Lusaka 1 hour

Lusaka to Royal or Jeki Airstrip for Lower Zambezi 35 min

Lusaka to Mfuwe Airport for South Luangwa 1 hour 10 minutes

Mfuwe Airport to Lilongwe Airport 1 hour

All flights Livingstone to Mfuwe/Lower Zambezi are all via Lusaka and vice versa

Departure Taxes

Departure taxes are included in ticket prices.

Weight & Luggage Restrictions

Luggage allowance on Proflight flights is restricted to 23 kg per person travelling on Y- class seats. For any other class or charter flight, the luggage allowance is 15kg per person. Excess baggage will be charged extra for. Any bag over 32kg will not be flown. Only one piece of hand luggage with a maximum weight of 5kg is allowed per person. Please note that a handbag is considered as a piece of hand luggage.



Visa

Some visitors need to apply for visas before arrival please check with your Embassy.

For more information on visas please visit the following address:

Botswana Government - Visa Requirements

BORDER CROSSINGS

Currency

The currency of Botswana is the Pula (BWP). US\$ Dollar notes (2007 Series onwards), and Visa and MasterCard are accepted.

Internal Flights and Transfers

Due to the remote areas the camps and lodges are based in, transfers between camps may take place by boat, mekoro, game drive vehicle or light aircraft.

Flight times around Botswana | Approximate flying times

Flight duration times (as listed below), are to be used as an average guideline. They are based on actual flying time, and passengers may have various stops en-route to a destination affecting the total travel time. Your pilot will brief you of your flight route and duration during the safety briefing.

Maun - Delta:	15 to 30 minutes
Delta – Delta:	10 to 20 minutes
Delta - Linyanti:	30 to 40 minutes
Maun – Linyanti:	50 to 60 minutes
Linyanti - Kasane:	40 to 60 minutes
Maun/Delta - Kasane:	60 to 80 minutes
Maun - Makgadikgadi/Desert:	40 to 60 minutes

Departure Taxes

Departure taxes are included in ticket prices.

Weight & Luggage Restrictions

See Booking Information
